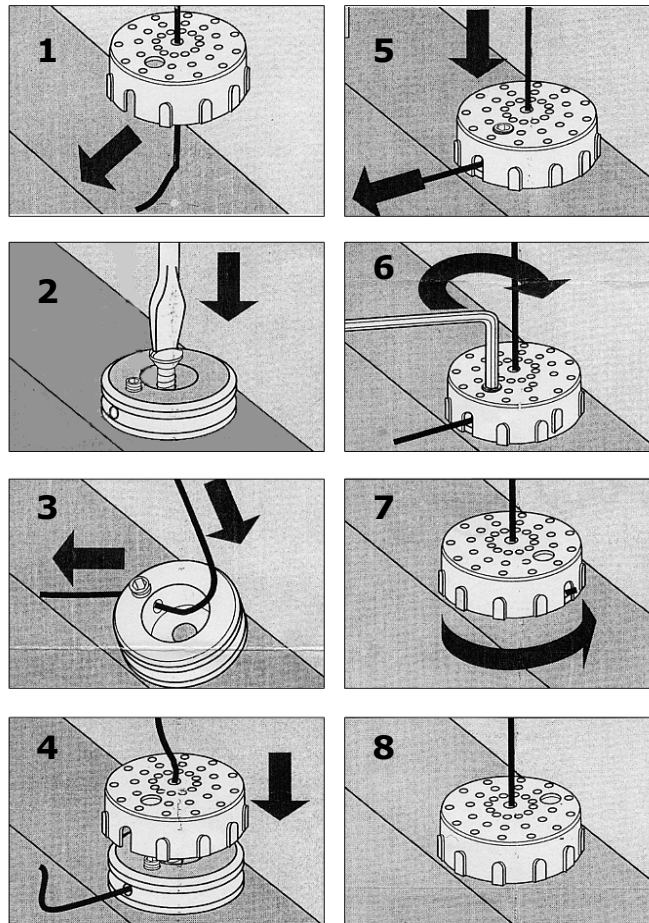


Installation of cable guide support system

Cable guides are an optional item to give added support to the solar screens. They are ideal for windows that slope inwards or outwards or for rooftop windows. Here is a simple step-by-step guide for installing the cable guide support system



When cable guides have been requested as an optional extra they are provided with the blind and are fixed through the top of the cassette and fed through the bottom rail. Firstly, unravel the coiled cable guides provided so that they hang vertically down either side of the blind.

1. Feed one plastic cover onto both cable guides through the centre hole, ensuring the dotted top is facing upwards as shown.
2. Measure vertically down from the blind perpendicularly, mark fixing point for metal bottom fitting on window sill or base
3. Screw both metal fittings to window sill or base on either side using small screws provided.
4. Feed one cable guide through metal base fitting once secured; carry this out on either side.
5. Once the cable guide has been threaded through, push plastic cover down over metal fitting, ensuring hole for tightening cable guides is visible.
6. Pull cable guides tight using pliers; cable guides should be tight and rigid with a good deal of tension.
7. Using 2mm Allen key provided, tighten metal fitting to secure cable guides using the tightening hole
8. Once tightened snip the excess cable guide thread at the bottom and rotate plastic fitting so that tightening hole is no longer visible.
9. Cable guides installation is then complete.